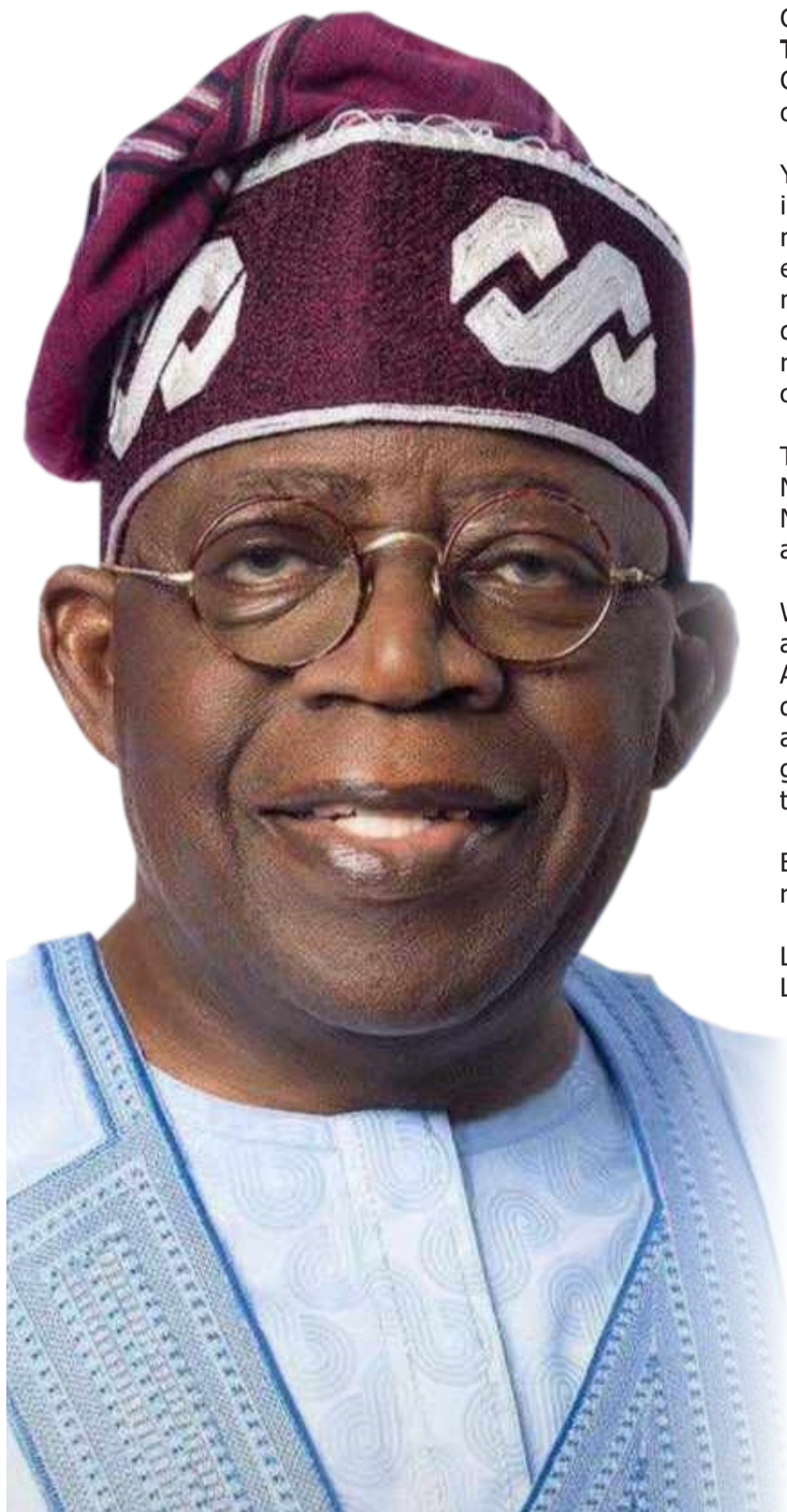




FEDERAL ROADS MAINTENANCE AGENCY (FERMA)

163, AMINU KANO CRESCENT WUSE II, ABUJA
www.ferma.gov.ng

CELEBRATING THREE YEARS OF OUTSTANDING INTERVENTIONS IN ROAD REPAIRS UNDER PRESIDENT BOLA AHMED TINUBU, GCFR.



His Excellency,
Bola Ahmed Tinubu, GCFR
President and Commander-in-Chief of the
Armed Forces of the Federal Republic of Nigeria

Congratulations to **His Excellency, President Bola Ahmed Tinubu, GCFR**, on the occasion of your third year in office as Commander-in-Chief of the Armed Forces of Federal Republic of Nigeria.

Your Renewed Hope Agenda continues to strengthen national infrastructural development, with notable attention to road maintenance. This has improved connectivity, boosted economic activities and enhanced mobility for citizens nationwide. For FERMA, your leadership has reinforced our determination to be more effective in maintenance of Federal roads and improved service delivery to road users across the country.

These three (3) years have delivered dividends of democracy to Nigeria in the road sector. As FERMA has resolved to ensure Nigeria roads are motorable all year round, by improving road asset condition for safer passage across the network.

We congratulate all elected public office holders and Nigerians at large on this special anniversary occasion.

As you mark this milestone, we commend your vision and dedication to strengthening partnerships, innovative financing, and sustained investment in the road sector as a driver of growth and national integration. May your leadership continue to deliver progress and lasting development for all Nigerians.

Below are pictures of the outstanding interventions of road repairs across the federation.

LONG LIVE The Federal Republic of Nigeria,
LONG LIVE FERMA

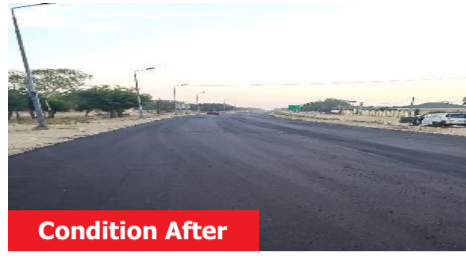


Dr. Emeka Agbasi, FNSE, FNIHTE, FNICE
Managing Director/CEO

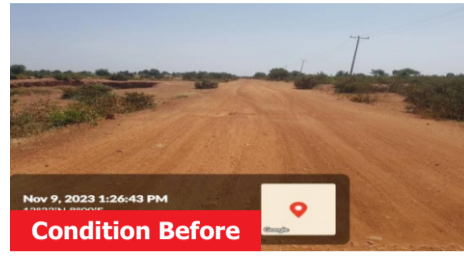
SOME OF THE PROJECTS EXECUTED UNDER ENGR. CHUKWUEMEKA C. AGBASI, PhD, DIC, FNSE, FNIITE, FNICE IN LAST THREE YEARS

NORTH WEST

JIGAWA STATE
General Maintenance of Gumel - Maigatari Niger Republic Border Road (Route 320), Jigawa State



KANO STATE
Rehabilitation of Dumbulun - Tsanyawa Road Km 0+000 – Km4+500, Kano State



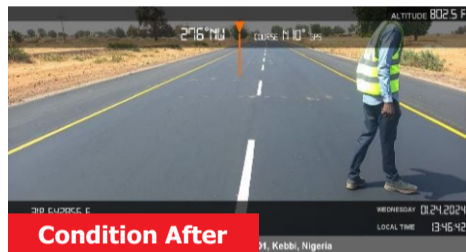
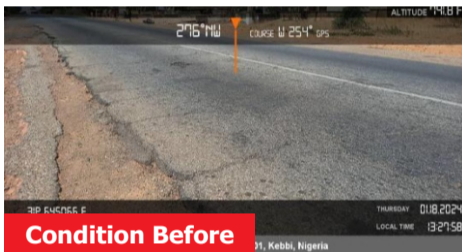
KATSINA STATE
General Maintenance Repairs of Malumfashi - Kafur - Dabai Km 15+000 - Km 45+000 Road, Katsina State



KADUNA STATE
Rehabilitation of Collapsed Double Cell Pipe Culvert and Reinstatement of Embankment Washout at Ch.1+550 along Kaduna Western By-pass



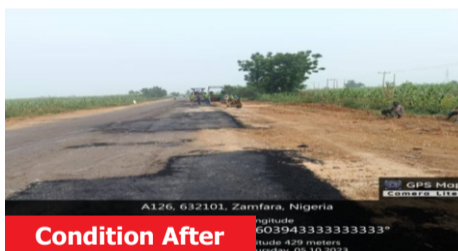
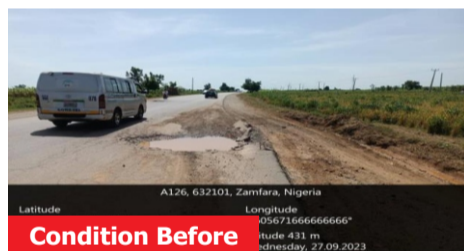
KEBBI STATE
Emergency Patching of Dangerous Potholes Between Km.0+000-Km.26+236 Along Kalgo-Bunza-Kamba-Peka-Niger Republic Border Road, Kebbi State



SOKOTO STATE
General Maintenance and Repairs of Gwiwa Low Cost Mangoro Road, Sokoto State



ZAMFARA STATE
Rehabilitation of Gusau Bypass Road, Zamfara State



NORTH CENTRAL

NASARAWA STATE
General Maintenance Repairs of Lafia – Shendam Road, Nasarawa State



KWARA STATE
General Maintenance Repairs of Ilorin - Ogbomosho Dual Carriageway, Kwara State



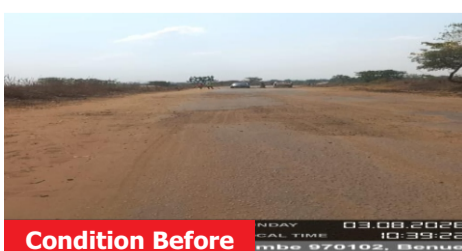
NIGER STATE
General Maintenance, Rehabilitation and Repairs of Kainji Dam-New Bussa-Wawa Road, Ch.45+000 – Ch.60+000, Niger State



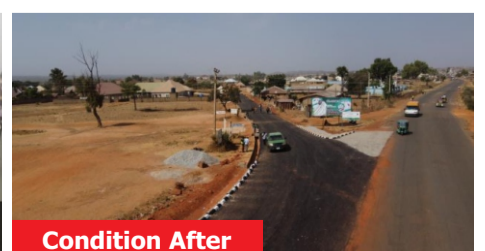
KOGI STATE
General Maintenance of Ajaokuta-Itobe-Ayangba-Ankpa Road, Kogi State



BENUE STATE
Repairs of Makurdi – Wannune Road, Benue State



PLATEAU STATE
Revamping of Mista – Ali – Riba – Zagun Road, Plateau State



ADAMAWA STATE
General Maintenance Repairs of Mayo Belwa – Zing Taraba
(S/B) Road, Adamawa State



Condition Before

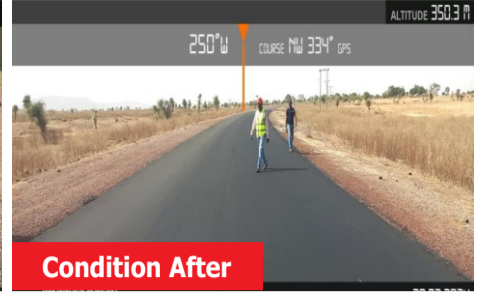


Condition After

GOMBE STATE
General Maintenance of Gombe - Potiskum Road
Ch.48+848-Ch.49+310 Gombe State



Condition Before



Condition After

BAUCHI STATE
General Maintenance of Gamawa – Udubo Road
R333/F13, Ch.34+000 – Ch.44+753 Bauchi State



Condition Before



Condition After

YOBE STATE
Major Maintenance and Repairs of Potiskum-Kari-Bauchi
S/B Road Km.10+700 – Km.11+300, Yobe State

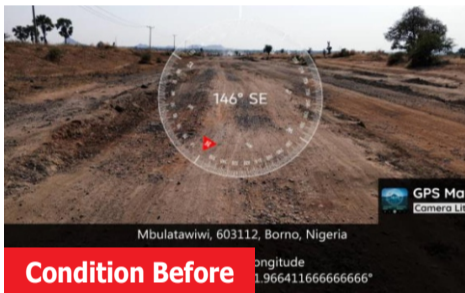


Condition Before

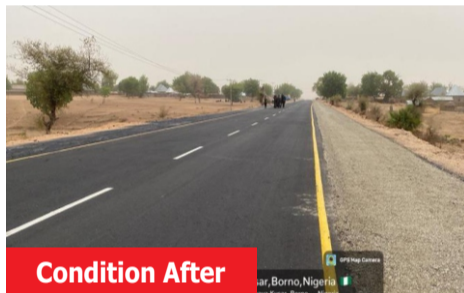


Condition After

BORNO STATE
Repairs of Shani - Borgu Road,
Borno State



Condition Before



Condition After

TARABA STATE
Emergency Repairs of Failed Segmented Section between
Km. 87+000 (LAT 830.1439 on LONG 01037.1741oe)–Km. 87+500
(LAT 828.8654on LONG 01036.2269oe) along Jalingo – Mutum
Biyu –Benue State Border Road, Route No. 90, Taraba State



Condition Before



Condition After

SOUTH SOUTH

AKWA IBOM STATE
Maintenance of Eket - Ikot Abasi Road Ch.15+560 –
Ch.32+500, Akwa Ibom State.

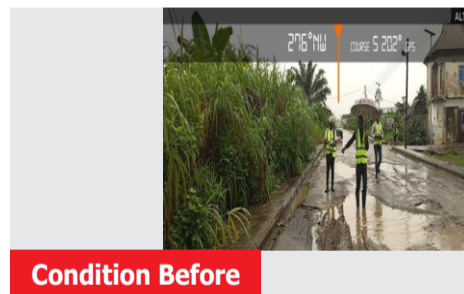


Condition Before

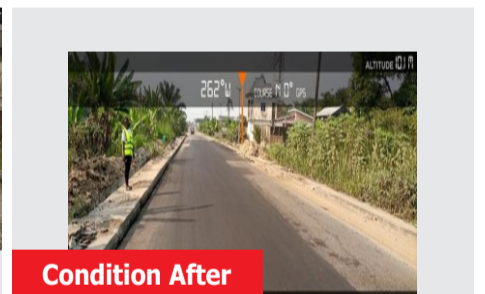


Condition After

BAYELSA STATE
General Maintenance on Carriageway Along Opolo-Elebele-Emayal
Road Between Km.11+400 and Km.13+300, Bayelsa State



Condition Before



Condition After

CROSS RIVER STATE
Special Repairs of Critical Failed Sections
along Calabar -



Condition Before



Condition After

RIVERS STATE
General Maintenance and Reinstatement of Critical Failed
Sections along Ahoda - Abua – Degema – Hulk Road, Rivers State



Condition Before



Condition After

DELTA STATE
General Maintenance Repairs of Benin - Asaba - Onitsha
Dual Carriageway (Route No. 25), Delta State



Condition Before



Condition After

EDO STATE
Direct Labour Work for the Repairs of Failed Section at Ch 13+050
(Aduhanhan Bridge) along Benin - Agbor - Asaba Dual Carriageway
(Agbor Bound) (CH 13 + 050), Edo State



Condition Before



Condition After

SOUTH EAST

ABIA STATE
General Maintenance of Aba – Azumini Road
Route No. 409 (F.104), Abia State



Condition Before



Condition After

ANAMBRA STATE
Major Maintenance of Onitsha-Owerri Dual
Carriageway, Anambra State



Condition Before



Condition After

EBONYI STATE
emergency maintenance of abakaliki - Enugu state border
Road between Km. 43+000 - Km. 44 + 200, Ebony State



Condition Before

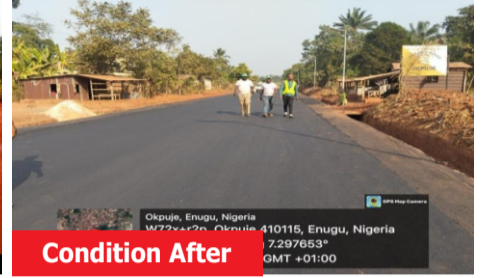


Condition After

ENUGU STATE
General Maintenance and Rehabilitation of Nsukka-Odolu
Kogi State Border Road, Enugu State



Condition Before



Condition After

IMO STATE
General Maintenance and Construction of Drainage along Okwelle-
Ojiama -Ideato Road Spur of Owerri Okigwe Road, Imo State



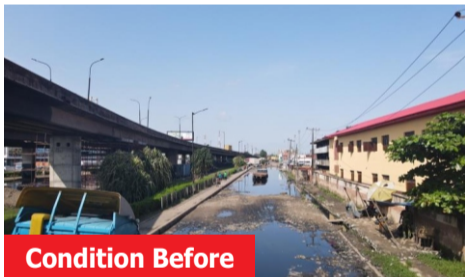
Condition Before



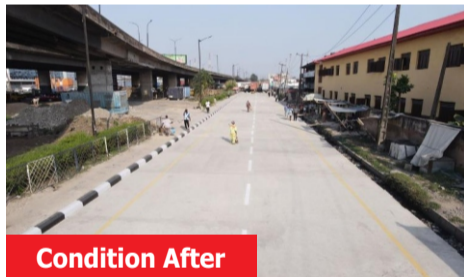
Condition After

SOUTH WEST

LAGOS STATE
General Maintenance and Repairs of Ijora
Causeway, Lagos State

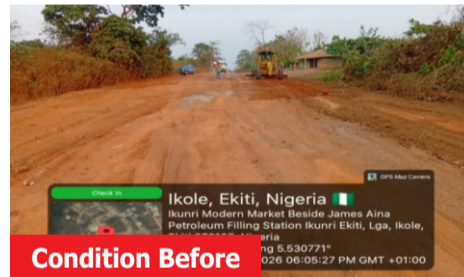


Condition Before



Condition After

EKITI STATE
General Maintenance/Repairs Of Ifaki-Ikole-Omuo-Kogi State
Border Road at CH. 42+000 - CH.43+194, Ekiti State



Condition Before

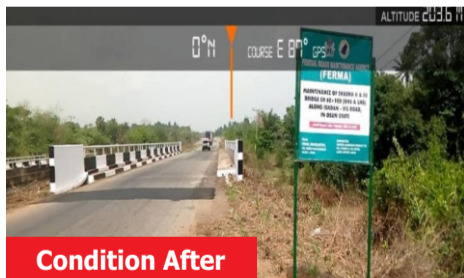


Condition After

OSUN STATE
Bridge Maintenance of Shasha II & III Bridge Ch. 60 + 100
(RHS & LHS) along Ibadan – Ife Road, Osun State



Condition Before



Condition After

OGUN STATE
Major Maintenance Repairs along Shagamu Interchange -
Papalanto Road Ch.0+055 – Ch.0+784, Ogun State



Condition Before



Condition After

ONDO STATE
General Maintenance Repairs of Ipele - Ifira - Ayere - Kogi State
Border Road, Route No. R40 (F220), Ondo State



Condition Before



Condition After

OYO STATE
General Maintenance Repairs of Iseyin - Ipapo -
Okaka - Alaga - Ago Are Road, Oyo State



Condition Before



Condition After

Signed:
Management
FERMA ... for Good, Safe and Friendly Roads